



Off the Shelf

2025 Annual Report



Our Community, Our Neighbors



Pam Molitoris
Executive Director

Director's Dish

As we begin this year and look back to the last, I am humbled by the spirit of our communities.

I have always known that our communities are strong and caring, however, in challenging times, I am reminded of how connected and committed we are to each other.

We are stronger together. "Our community, our neighbors" – this is not just a phrase in our Foodbank network, but a culture of what we do. When we act as one, for the benefit of all, we move mountains. We have been faced with a great deal of uncertainty and change recently. We assessed the situation, discussed strategies as we developed plans, and put those plans into action, adapting as we learned.

You are part of that action. I am amazed at how many of you made financial donations, volunteered, held food drives, and spread the call to action. When

SNAP benefits were unavailable, in a matter of days, supplemental food sites were up and running, staff and volunteers were distributing food alongside partner agencies, and people and organizations were dropping off food. Several of our partner agencies extended hours to greater serve our neighbors. In the first three food supplemental sites alone, over 1,000 people were fed, with over 60% of those being children.

Each time we hit a bump in the road, we come out on the other side, more informed, more resilient, and more prepared to deal with challenges and opportunities. We are so grateful for the community that we live in, for the communities that each of you has been part of strengthening. Together we are ensuring that when neighbors are fed, futures are nourished.

Thank you!

Pam Molitoris

Community Partnerships at Work



1. Steve and Jodie Koch helped provide nearly 650 families with healthy, nutritious food.

2. Staff and volunteers from Schuyler County Food Basket unload boxes of fresh produce and whole chickens at the Schuyler County Fairgrounds.

3. An Illini Community Hospital volunteer places a tray of baby tomatoes into a neighbor's trunk. Through our partnership, Illini Community Hospital and the Foodbank worked to reach families across rural communities in Western Illinois.

4. Volunteers from United Way of South Central Illinois came together to distribute fresh produce and protein to the Mt. Vernon community.

Continued on page 4

FY25 STATEMENT OF ACTIVITIES

Year Ended May 31, 2025

Revenues and Other Support Revenues

Program Service Fees	\$ 1,076,317
Grants & Contracts	\$ 2,245,390
Contributions	\$ 2,663,230
Contributed Food Received	\$ 14,015,355
Interest	\$ 254,159
Other	\$ 6,480
Unrealized gain on investments	\$ 252,132
Realized gain on investments	\$ 3,660
Total Revenues & Other Support	\$ 20,516,723

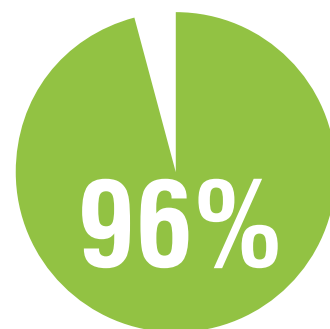
Expenses

Foodbank Operations	\$ 4,130,371
Contributed Food Distributed	\$ 14,693,506
Administrative & Fundraising	\$ 815,544
Depreciation	\$ 371,179
Total Expenses	\$ 20,010,600

Change in Net Assets without Donor Restrictions	\$ 537,522
Change in Net Assets with Donor Restrictions	\$ (31,399)
Total Change in Net Assets	\$ 506,123

Net Assets at Beginning of Year	\$ 16,544,572
Net Assets at End of Year	\$ 17,050,695

**Our mission is to
provide food, and
develop awareness of
creative solutions for
food insecurity.**



Thanks to the combined impact of donated food and funds, 96% of the Foodbank's expenses directly support programs that feed people.

**\$1.00 =
3 meals**

Every dollar you donated helped provide the equivalent of three meals.



The Foodbank's board is composed of community members who bring diverse personal and professional experiences to our mission.

BOARD OF DIRECTORS

Robbie Robert • President
Jake Saladino • Vice President
Darren Epperson • Treasurer
Christine Novaria • Secretary

Erin Bromley
Felicia Burton
Terra Curtis – Trumbo
Sarah Enlow
Joe Faloon
Josh Johnson
Tiffany Penley
Matthew Trapp

Community Partnerships at Work (cont.)



1. The Springfield Police Department helped distribute food and direct traffic at our October and Thanksgiving distributions.

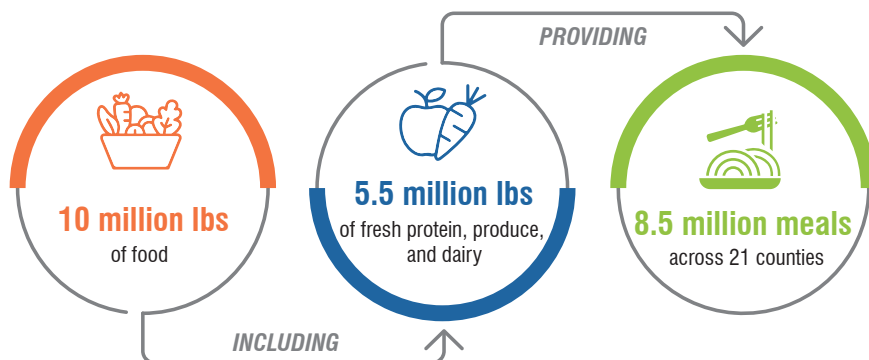
2. Lead sponsor, Friend-In-Deed, packed and helped distribute Thanksgiving boxes. Their generous support provided 1,500 families with nutritious food for the holidays.

3. Bill Roberts, one of our Thanksgiving Distribution sponsors, is pictured with Foodbank Executive Director Pam Molitoris, Springfield Police Chief Joseph Behl, and Commander Grant Barksdale.

4. Ameren Illinois, another sponsor of the annual Thanksgiving Distribution, volunteered on-site, helping direct traffic and support a smooth distribution for our neighbors.

5. Anita B., a resident at Capital Retirement, with a Thanksgiving meal courtesy of Steve and Jodie Koch. This marks the fourth year the Kochs have donated holiday meals, going door to door to greet residents and deliver their dinners.

6. Fraternity and sorority members directed traffic and distributed food at our October and Thanksgiving distributions.



STAFF

Pam Molitoris • Executive Director
Jane Kiel • Finance Director
Kevin Mackiney • Operations Director
Chloe Lucca • Development Director
Wes Ridgeway • Program Manager
Karleen Wagoner • Food Acquisition Manager
Alexis Johnson • Community Engagement Specialist

Trent Rossi • Program Coordinator
Meghan Allen • Program Coordinator
Darren Farley • Sort Room Supervisor
Darryll Kelly • Lead Warehouse Worker
Jenny Knuth • Accounting Assistant
Tori Rogers • Operations Assistant
Michelle Collins • Administrative Assistant

Check out our new website!



1937 E. Cook St.
 Springfield, IL 62703
 217-522-4022
 Fax 217-522-6418
centralilfoodbank.org